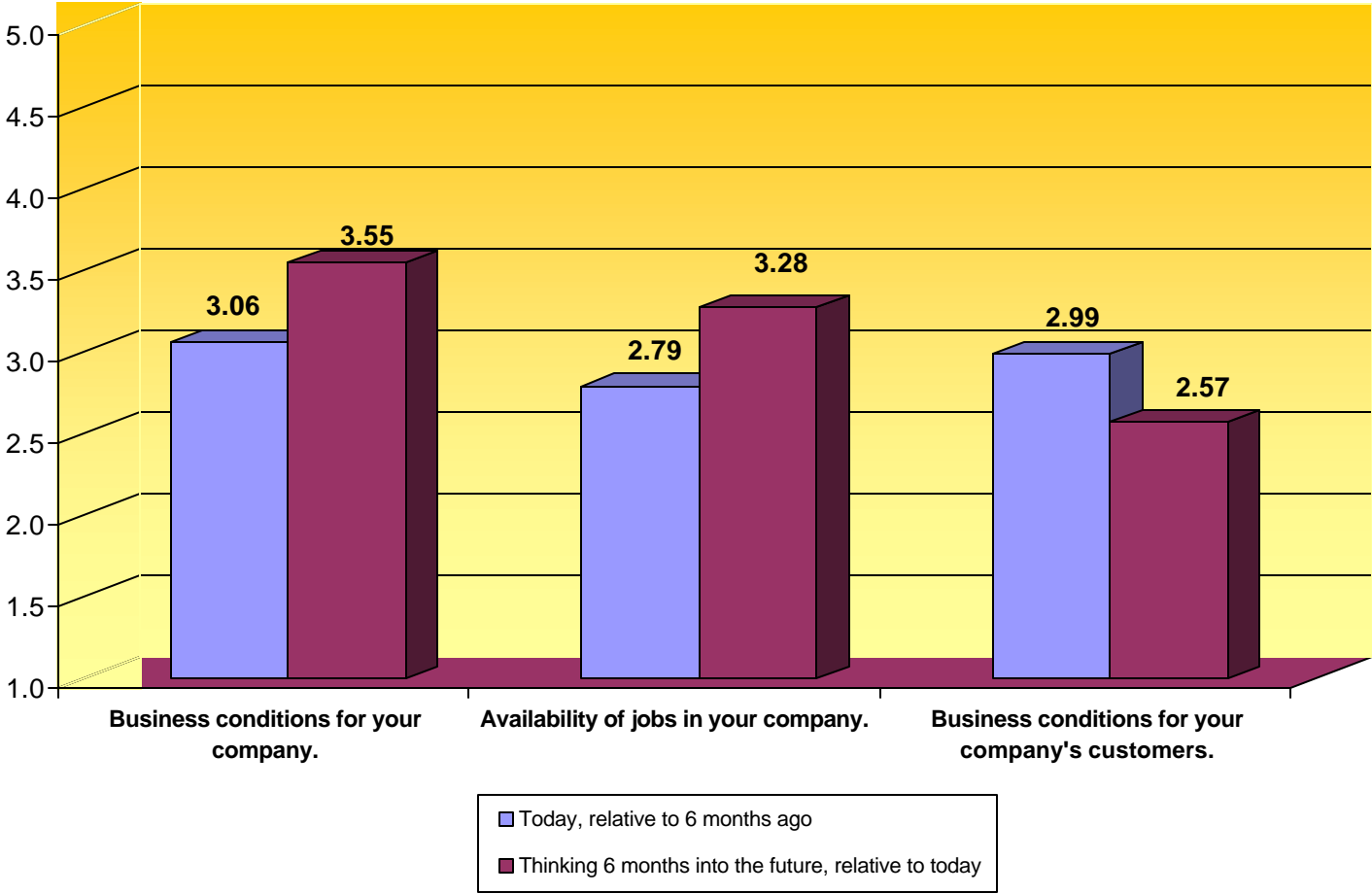
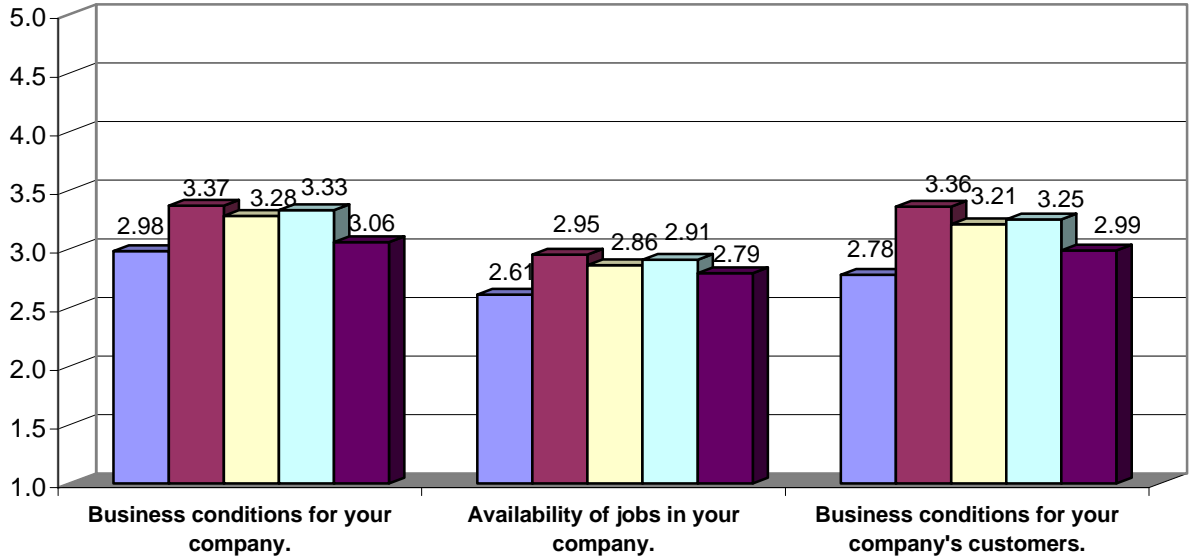


Silicon Valley Business Sentiment Index
SCU Alumni June 2002; Valid N= 89.
Prepared by The Survey Company.
Scale: 1=Much Worse, 5=Much Better



Today, relative to 6 months ago
Silicon Valley Business Sentiment Index
SCU Alumni June, 2002; Valid N= 89
Scale: 1=Much Worse, 5=Much Better

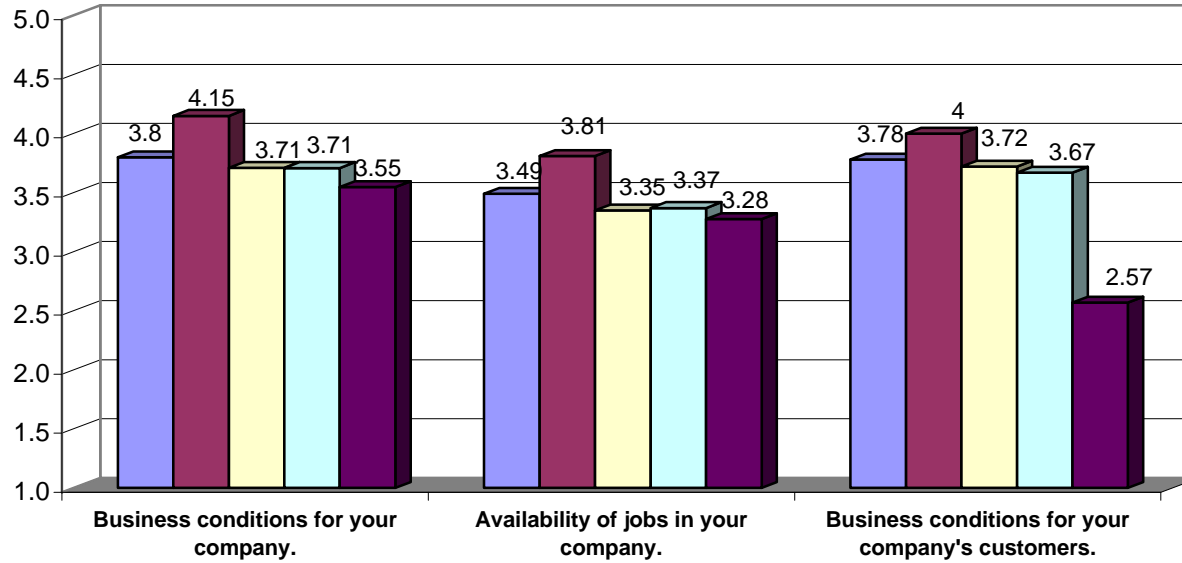
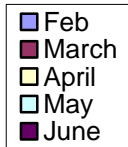


Thinking 6 months into the future, relative to today

Silicon Valley Business Sentiment Index

SCU Alumni June, 2002; Valid N= 89

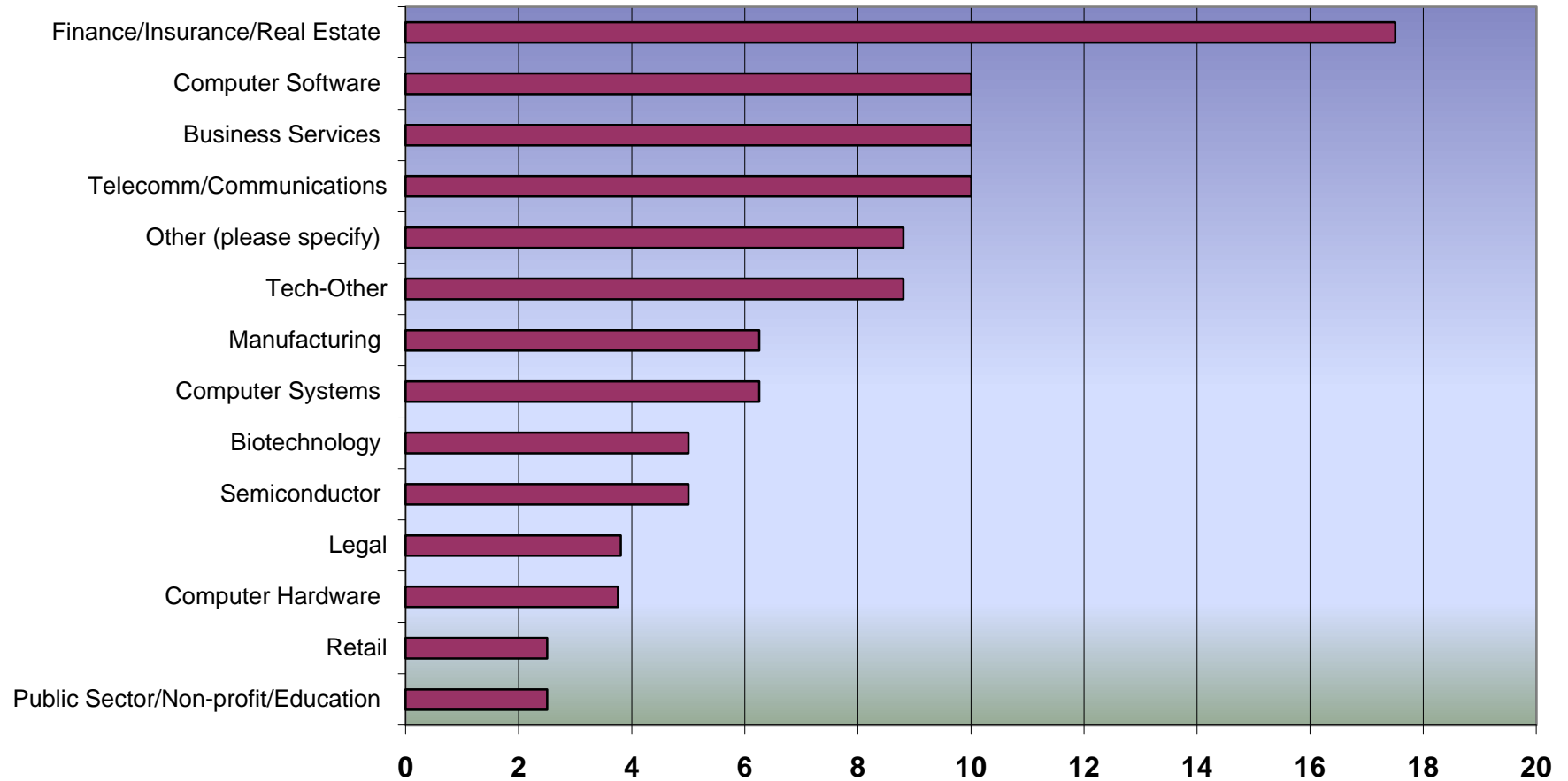
Scale: 1=Much Worse, 5=Much Better



Industry Categories Represented

(% of respondents in each category; N=89)

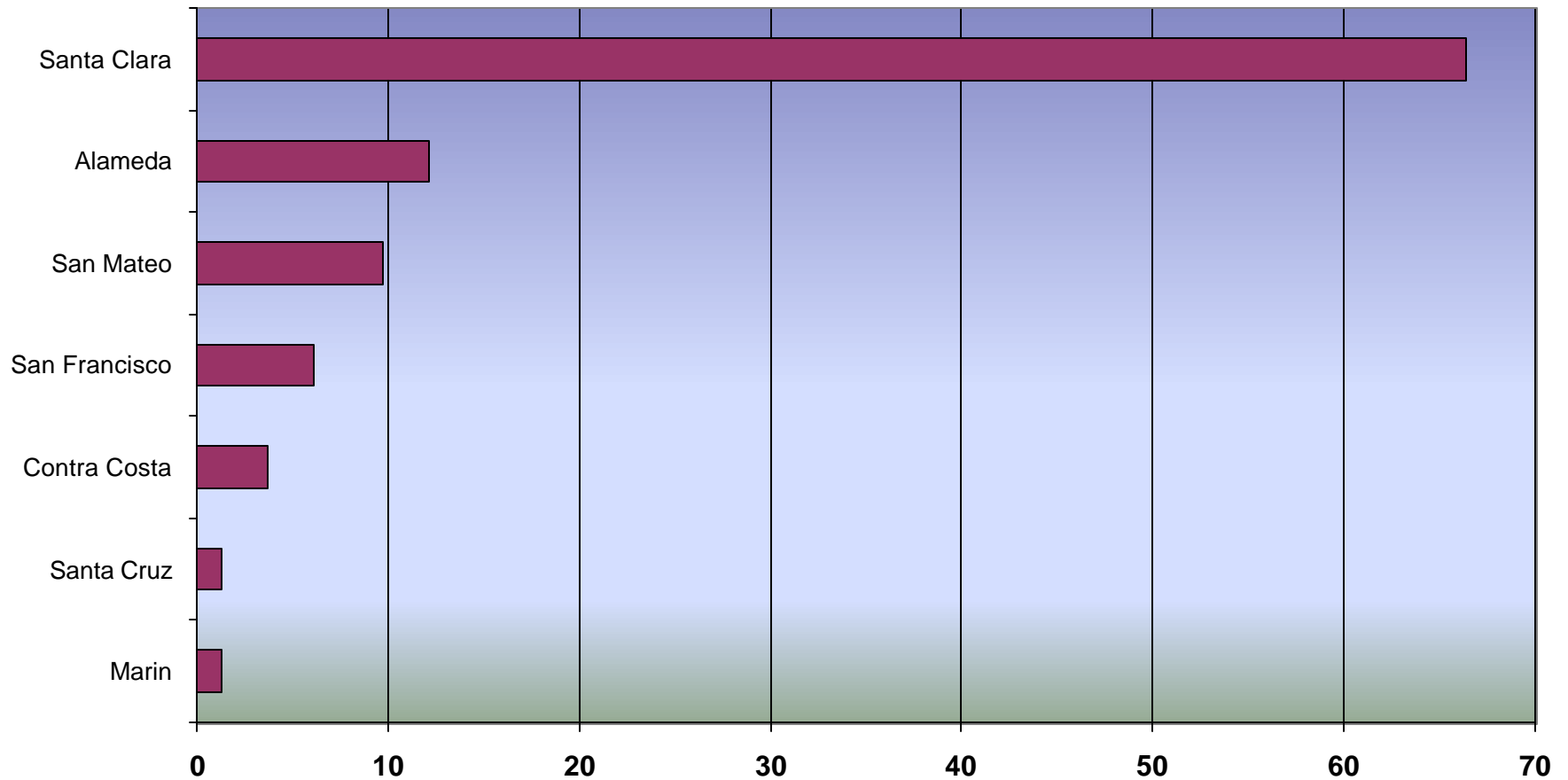
SCU Business Sentiment Survey June 2002



In what county is your place of employment located?

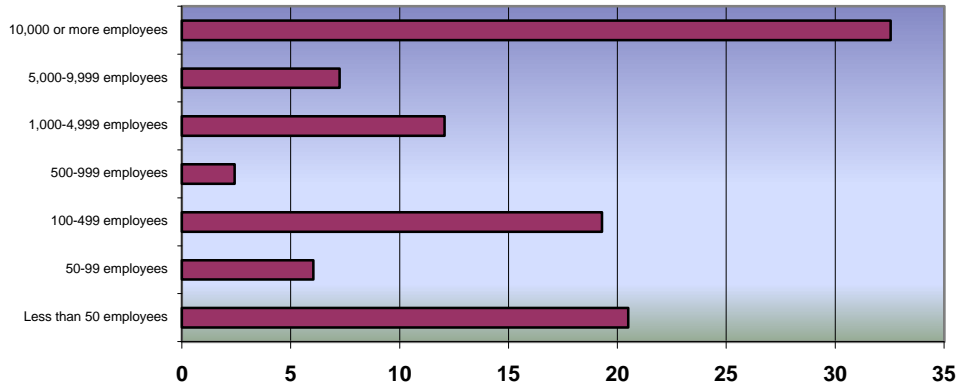
(% of respondents in each category; N=89)

SCU Business Sentiment Survey June 2002



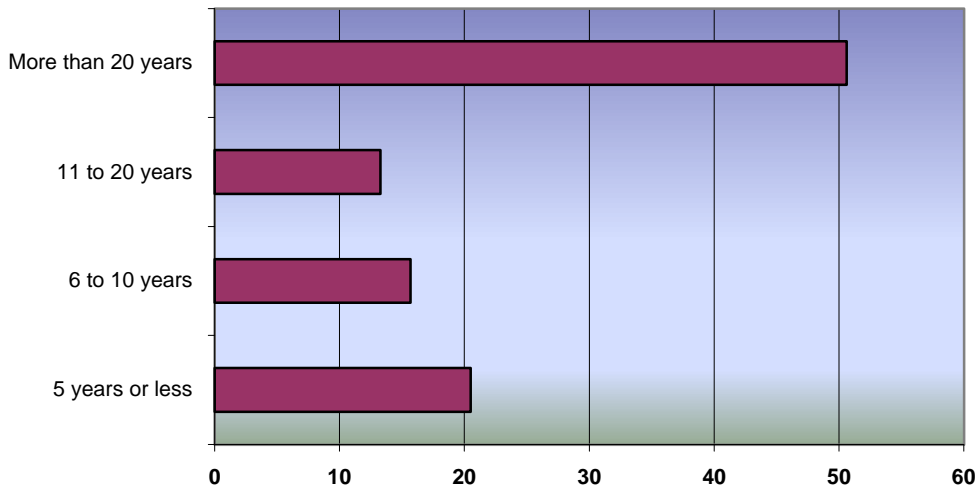
How many employees in your company?

(% of respondents in each category; N=89)
SCU Business Sentiment Survey June 2002



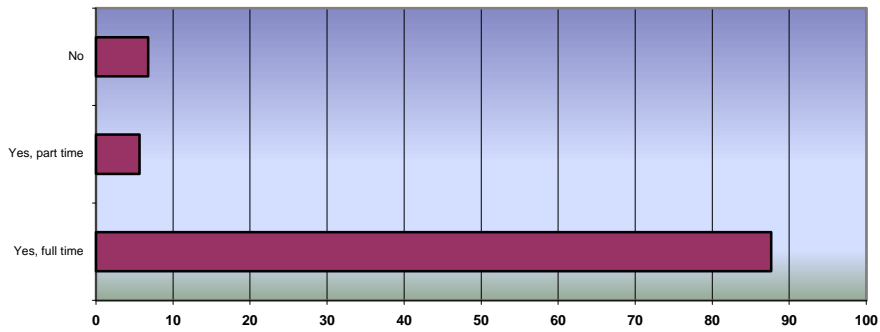
Age of Your Company

(% of respondents in each category; N=89)
SCU Business Sentiment Survey June 2002



Are you currently employed?

(% of respondents in each category; N=89)
SCU Business Sentiment Survey June 2002



How long have you been employed in your current industry?

(% of respondents in each category; N=89)
SCU Business Sentiment Survey June 2002

